

CorelCADTM 2015

powered by ARES[®]

Reviewer's Guide

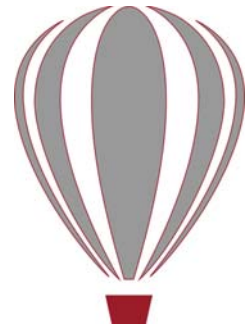
CorelCAD™ 2015

powered by ARES®

Contents

1	Introducing CorelCAD 2015	1
2	Customer profiles	3
3	Key features	7
	Precise 2D drafting and 3D design solutions.....	7
	Advanced .DWG file support and industry-standard tools.....	12
	Powerful CAD engine and CorelDRAW graphics support	16
	Flexible licensing and customization options for Windows & Mac OS .	17
4	Integrating CorelCAD 2015 into other graphics workflows ...	19
5	Comparing CorelCAD 2015 to Light CAD applications	21

1



Introducing CorelCAD™ 2015

CorelCAD™ 2015 is the smart solution for day-to-day design work requiring precision and detail, providing high-level CAD performance without the high cost typical of CAD solutions.

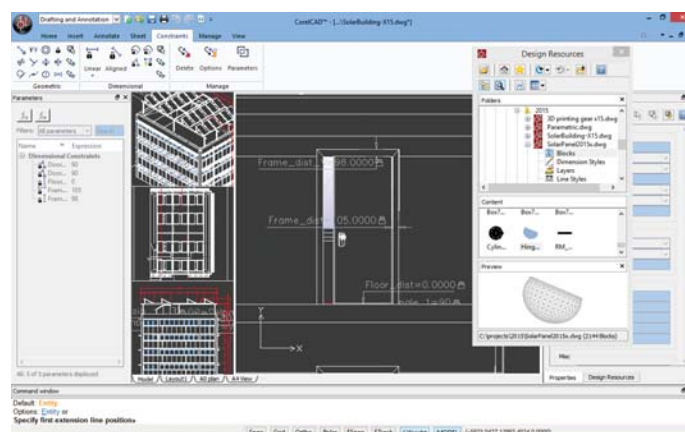
Enterprises that rely on CAD have always had tough choices to make about software. While there are several budget-priced alternatives, many lack critical tools or use a format that impedes collaboration and sharing. CorelCAD 2015 simplifies things by offering an inexpensive, full-featured 2D CAD application with 3D solid modeling tools.

The use of CAD files is becoming more commonplace for a wide range of graphics professionals, from technical illustrators to designers in marketing departments — even among 3D printing enthusiasts. As such, the ability to open and repurpose CAD content, such as .DWG files, has become a requirement that saves organizations both time and money.

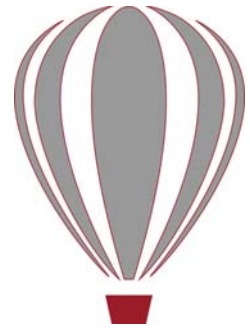
The native CorelCAD file format (.DWG) supports the latest AutoCAD .DWG file format (R2013 .DWG, as used by AutoCAD 2013 - 2015), ensuring total fidelity with the industry standard. CorelCAD can also handle the file attributes of non-supported AutoCAD features and preserves functionality in .DWG files, eliminating conversion and sharing issues.

If you're familiar with other popular CAD tools, making the transition to CorelCAD 2015 is straightforward. CorelCAD incorporates a range of tools, commands, and UI elements found in other CAD software so any CAD designer can quickly get to work with no learning curve.

Windows has traditionally been the operating system of the CAD world, but there are pockets of dedicated Mac users. With that in mind, CorelCAD is optimized for both platforms — and at a fraction of the price of other CAD software available for the Mac.



2



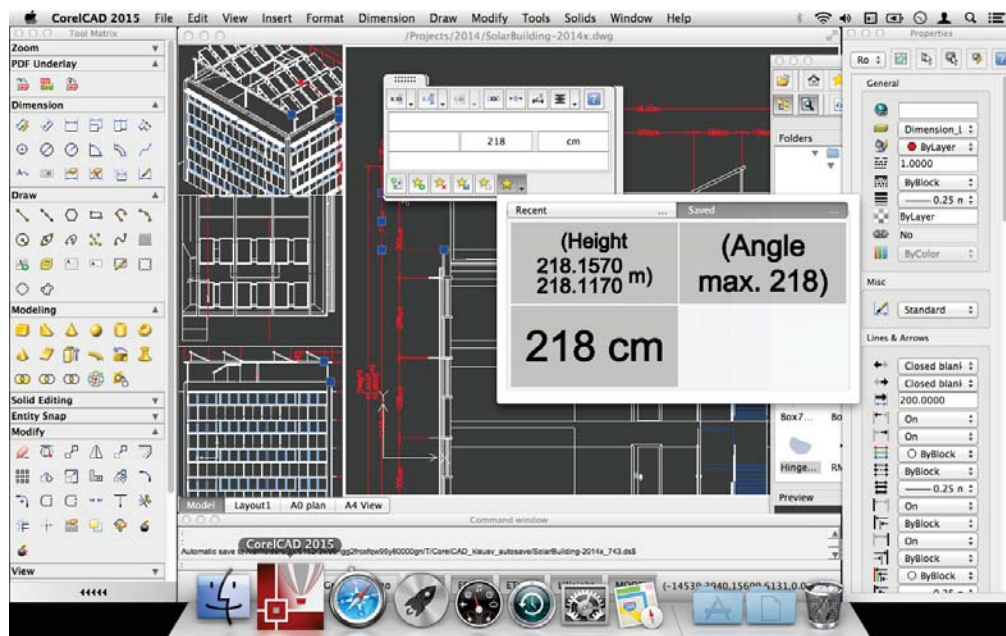
Customer profiles

Architects, Engineers, and Construction (AEC) service providers

In the AEC sector, CAD designers work primarily in 2D, but with an increasing emphasis on 3D design. They work for small to medium-sized firms and create a variety of drawings, including 2D designs for drafting and construction plans, elevations, floor plans, and construction details. Their projects are just as likely to be created from scratch as to be based on legacy design components. The ability to collaborate and exchange files with colleagues and clients is critical to their workflow. And, many architects prefer the Macintosh operating system or work in a hybrid Windows PC and Macintosh environment.

CorelCAD 2015 offers a lightweight, standards-compliant 2D application that supports 3D solid modeling. The ability to work in the .DWG format, including AutoCAD 2015 .DWG files, eliminates any conversion issues when exchanging files with colleagues or reusing legacy files. Collaboration is simplified and accelerated through support for voice notations and commenting in editable drawings. Plus, files can be exported to CorelDRAW (CDR)*, Corel DESIGNER (DES)*, and PDF, simplifying information sharing with other departments in their company, such as documentation or marketing. What's more, CorelCAD 2015 is optimized for both Windows and Mac OS, so users can work on the platform they prefer.

** Windows version only*



3D Enthusiasts and DIY designers for 3D printing

3D enthusiasts and Do-It-Yourself (DIY) designers for 3D printing are playing a critical role as this technological revolution becomes more mainstream. They're at the forefront of realizing the unlimited potential and output possibilities of 3D printing.

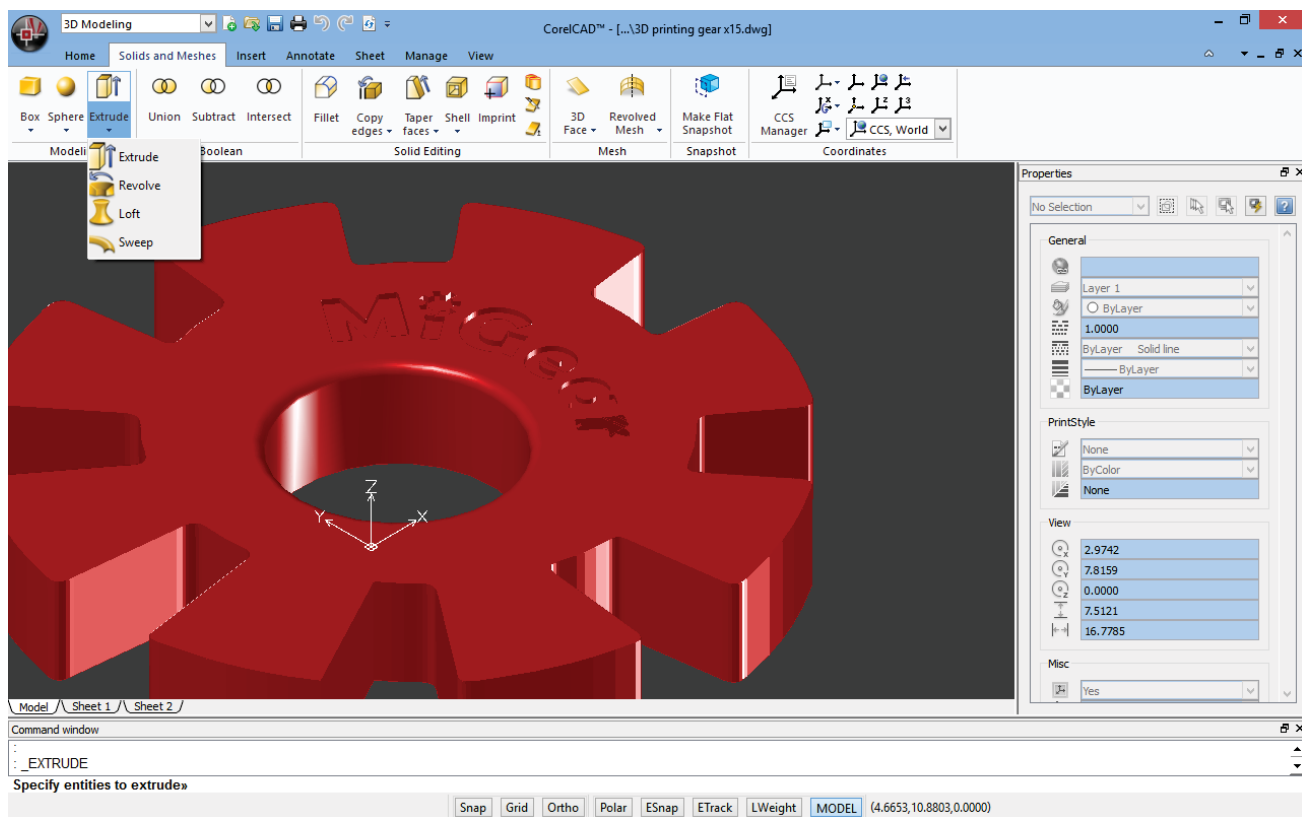
The foundation of their 3D printing projects is built using 2D vector graphics. The first step in their workflow is a 2D sketch because it's easier, faster and more intuitive than attempting to draw a 3D design from scratch.

After exporting the 2D design to .DWG, they use a 3D design application to complete the

transformation from 2D to 3D. They then export it to print on a 3D printer or send it to a 3D printing output service.

CorelCAD is part of a powerful range of Corel products that provide all the specific tools needed for a 3D printing project. The ability to directly import CorelDRAW (CDR)* sketches means users can move from the initial sketching to the 3D design phase without any disruption. Then, DIY designers turn to CorelCAD 2015 for a simplified 2D-to-3D conversion process and precise design tools to complete the project. They also seek the file compatibility CorelCAD 2015 offers with a range of common formats integral to 3D printing projects.

** Windows version only*



Occasional 2D CAD users

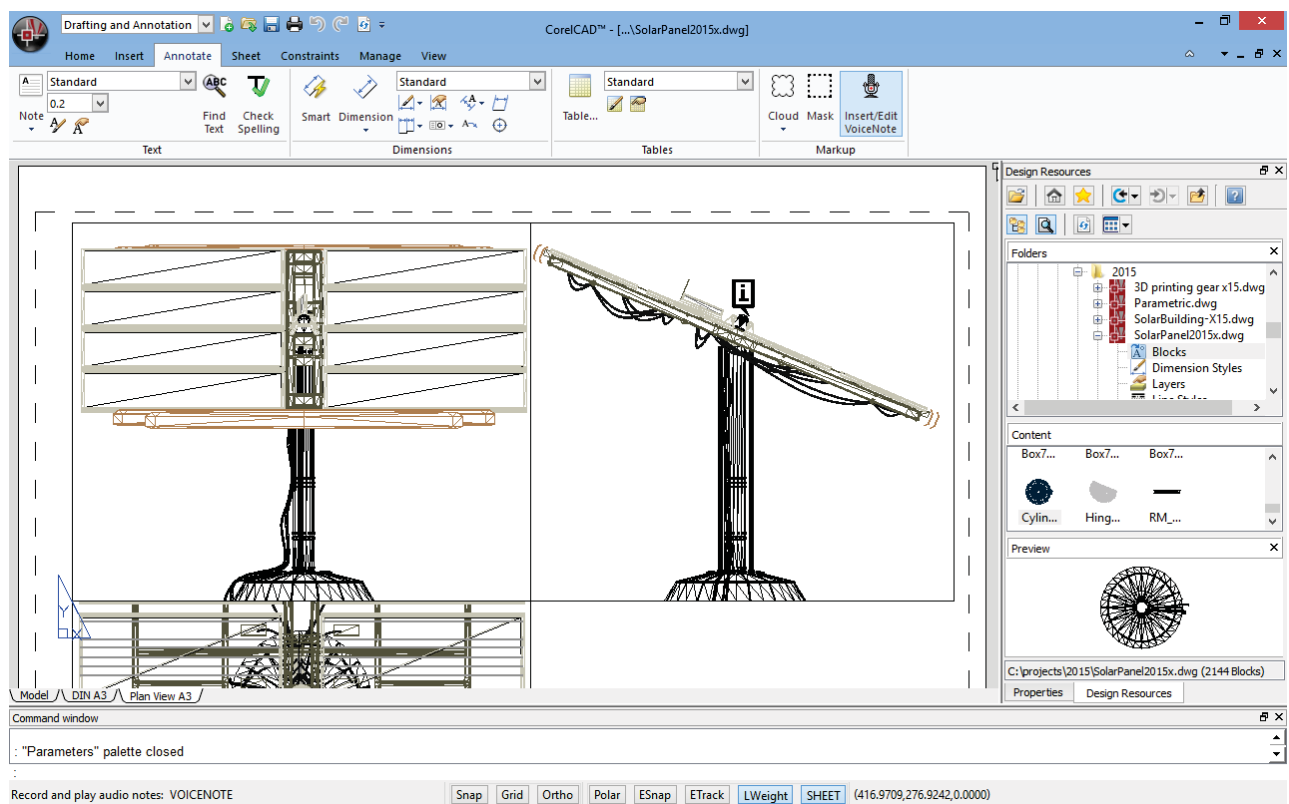
There are two groups of occasional 2D CAD users, each with distinct needs and workflows.

Firstly, CAD designers working for large enterprises in the manufacturing sector design primarily in 3D, however, they still need 2D support. The types of drawings they design include assembly schematics and parts details, and many of their legacy files are 2D CAD (.DWG), which have to be maintained. A 2D draft will often serve as the basis for a 3D design, and they need to be able to repurpose 3D files to add detail to 2D drawings. To share their work with other departments, they publish CAD drawings to a range of formats.

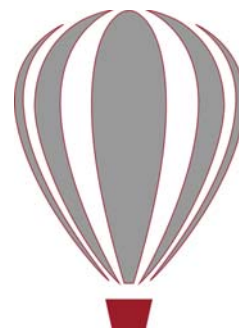
Secondly, graphic designers need a tool to edit CAD files that supports all elements of .DWG drawings, such as model spaces and layout sheets. They work in marketing and technical documentation departments, and the ability to work with 2D CAD files allows them to reuse design content in user guides, marketing materials, and presentations.

CorelCAD addresses these needs by offering an affordable, standards-compliant 2D CAD application that complements 3D CAD solutions. The ability to import drafts from CorelDRAW (CDR), and export CAD drawings to CorelDRAW and Corel DESIGNER file formats* simplifies repurposing content, ensuring that users can maintain and reuse legacy content.

** Windows version only*



3



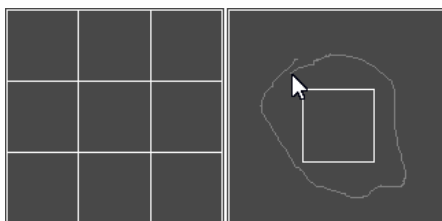
Key features

With native .DWG file support, industry-standard CAD features, customizable 2D and 3D design tools, and compatibility with a range of common formats, CorelCAD 2015 helps users be more productive. Optimized for both Windows and Mac OS, CorelCAD delivers impressive speed, performance, and customization on your preferred platform.

Precise 2D drafting and 3D design solutions



Along with its comprehensive set of 2D drafting and drawing features, CorelCAD 2015 includes a set of 3D solid modeling tools at just a fraction of the price you'd expect.

New! Editing tools: CorelCAD 2015 helps you increase productivity with an expanded toolset that's designed to streamline 2D editing. The ExplodeBlockX command lets you explode blocks while maintaining their attribute values, and the DiscardDuplicates command simplifies geometry by removing overlapping segments. You can also precisely and interactively trim onscreen areas with the PowerTrim tool. The QuickModify tool is a great time-saver, allowing you to simultaneously move, rotate and copy design elements.



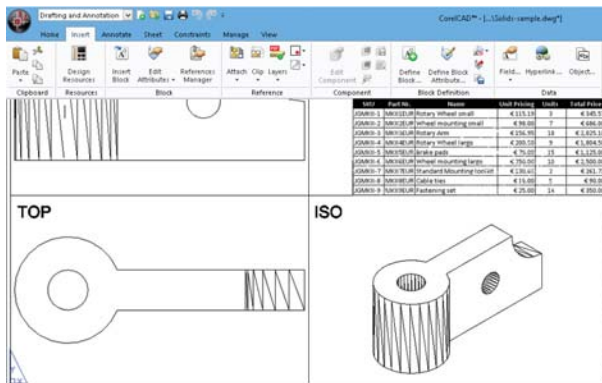
Give it a try

Trimming adjacent entities

- 1 Click **File** menu ► **New**, choose the standard template, and click **Open**.
- 2 Click the **Rectangle** tool  in the toolbox, and draw a rectangle.
- 3 With the rectangle selected, click the **Pattern** tool  in the toolbox.
- 4 In the Pattern dialog box, enable the **Linear** option, and click **OK**.
- 5 Click **Modify** menu ► **Power Trim**.
- 6 In the graphics area, click and drag the pointer over each entity you want to trim.
A trail is created along the trim path.
- 7 To finish trimming, release the mouse button, and press **Enter**.

Enhanced! Tables: Tables are often used to communicate important information in a CAD drawing, from bills of materials to project schedules. Updating or tweaking tables can be time-consuming and tedious work, but CorelCAD 2015 simplifies the process. You can now add and remove table rows, columns, and cells within CorelCAD 2015. You can even embed a Microsoft Excel spreadsheet as a linked object* so that the most up-to-date information is always in your design (*Windows version only). In addition, you can edit the

embedded spreadsheet in the CAD drawing using OLE in-place editing tools.



Give it a try

Embedding spreadsheets (requires Microsoft Excel)

- 1 In the 3D Modeling or Drawing and Annotation workspace, click the **Insert** tab.
- 2 In the **Data** group, click **Object**.
- 3 In the Insert Object dialog box, enable the **Create from File** option.
- 4 Click **Browse**, and navigate to the sample file **BoM.xls** (available for download [here](#)), click **Open**, and click **OK**.
The spreadsheet is inserted as an editable table.
- 5 Click in a table cell, and modify its contents.

New! Dimension palette: This new pop-up palette lets you work more efficiently with dimensions. It only appears when you need it, displaying all dimension-text formatting and property settings for quick editing. The Dimension palette also speeds up your workflow by simplifying the reuse of text, precision, and tolerance settings and allowing you to modify multiple dimensions at the same time.



Give it a try

Using the Dimension palette

- 1 Click **File** menu ► **New**, choose the standard template, and click **Open**.
- 2 Click the drop-down menu **Classic Default** in the upper left corner of the workspace, and choose **Drafting and Annotation**.
- 3 Click the **Home** tab.
- 4 In the Draw area, click the **Rectangle** group, choose **Rectangle**, draw two rectangles, and select one of them.
- 5 Click the **Annotation** tab.
- 6 Click the **Dimensions** group, and choose **Linear**, and add a dimension.
- 7 Move the pointer over the dimension to display the **Dimension** palette.
- 8 Enter text in the **Above Text** field.
- 9 Click the **Unit Precision** drop-down menu, and choose **0.0**.
The changes appear in the drawing as you modify the settings.
- 10 Click the **Add or Update Favorite** button, click the **Sphere** group, and choose **Sphere**.
- 11 In the Add or Update Favorite dialog box, type a name for this group of settings in the **Specify a name or select an existing one** field.
- 12 Select the second rectangle, and add a dimension.
- 13 Move the pointer over the dimension to display the **Dimension** palette.
- 14 Click the **Favorites List** button, and choose the settings you saved from the first rectangle.

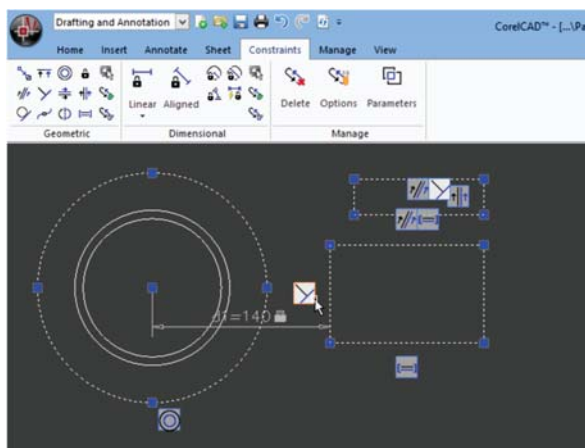
Note the dynamic preview of the stored favorites that displays how the selected dimension will look based on the favorite settings.

Give it a try

15 Select the first rectangle, and add a dimension, and move the pointer over the dimension to display the **Dimension** palette.

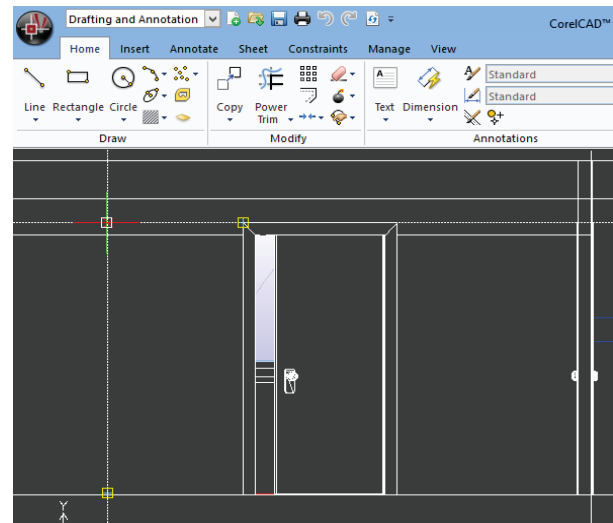
16 Click the **Apply Default** button to revert the dimension to its default settings.

New! Drawing constraints: The new drawing constraints feature help you work more efficiently and precisely. The dimensional constraints let you force object dimensions to adhere to fixed sizes and angles. The geometric constraints let you control dependencies and relationships between shapes in your 2D designs. For example, when you're working with designs that contain a variety of window types, you can vary the size of windows while maintaining the distance between the frame and the glass. Drawing rules can be defined on an object level so that variants can be quickly created without having to stick to the constraint.

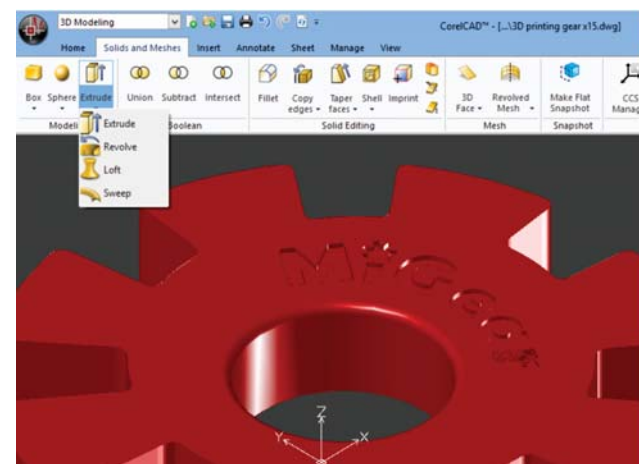


Smart drafting tools: CorelCAD 2015 has all the smart drafting tools you expect in CAD software, offering the same functionality that professional designers have grown accustomed to in graphics software. You can speed up drafting with a variety of entity snap modes, entity tracking, and polar guides. Custom coordinate systems can be created to align the construction plane with drawing objects. You

can also save time by using EntityGrips to quickly reposition, align, copy, or resize entities.





Solid modeling tools: With its 3D solid modeling tools, CorelCAD 2015 ensures that you can work with increasingly common 3D designs. Just like 3D CAD applications, you can add 3D solid primitives to your design and use Boolean operations to unite, intersect and subtract bodies. 2D entities can be extruded, revolved, or swept along a path. You can also loft between 2D entities to create solid objects. CorelCAD 2015 also gives you the ability to slice and intersect solids, and edit edges, faces and bodies of 3D solids.



Give it a try

Designing in 3D

- 1 Click **File** menu ► **New**, choose the standard template, and click **Open**.
- 2 Click the drop-down menu **Classic Default**  in the upper left corner of the workspace, and choose **3D Modeling**.
- 3 Click the **Solids and Meshes** tab.
- 4 Click the **Sphere** group, and choose **Sphere**.
- 5 Click in the graphics area to set the center point, and drag to set the radius.
- 6 Click the **View** tab, and click **View Tiles Manager**.
- 7 In the View Tiles dialog box, click **New**, and then choose **3D** from the **Orientation** drop-down menu.
- 8 Choose **Four:Left** from the **Default configurations** list, and click **OK**.
- 9 Click the **Rectangle** tool  in the toolbox, and draw a rectangle.
- 10 Click the **Solids and Meshes** tab, and click **Extrude** in the Draw area.
- 11 With the box and sphere selected, click **Shade**.

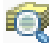
Print 3D designs from CorelCAD: You can export multiple 3D solid objects to stereolithographic file format (STL), the most commonly used format for processing 3D prints. STL support provides a direct connection to most 3D printers, which lets you print 3D prototypes, spare parts, custom 3D creations — the possibilities are endless.

Align Viewport tool: The Viewport command makes it easier than ever to arrange the elements of your drawings and gain better, more accurate sheet alignment. With CorelCAD 2015, viewports are aligned by the geometry within each viewport. This means that users no longer have to rely on guesswork to determine if their locations are precise.

Layer Preview: With CorelCAD 2015, you can quickly and easily preview the content of layers in complex CAD files. This helps you to understand a drawing's layer structure and find specific content.

Give it a try

Previewing layers

- 1 In the 3D Modeling or Drawing and Annotation workspace, click the **Home** tab.
- 2 In the **Layer** group, click the **Layer Preview**  button.
A list of all layers appears in the Layer Preview dialog box.
- 3 Click a layer to view its contents.
You can also **Ctrl-click** several layers at once to view their contents.

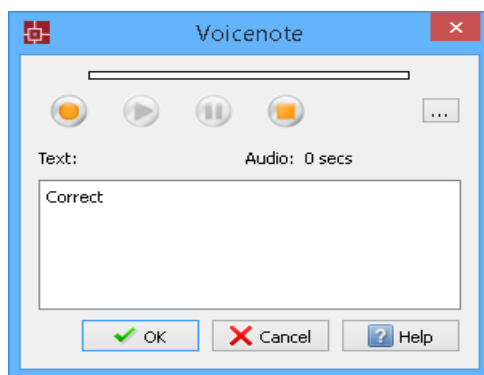
Organized layouts: CorelCAD lets you organize drawings into multiple tiled layouts using tabbed sheets. Each sheet can determine a different style of printing or plotting. The drawing window can be divided into multiple views, each displaying the drawing from a unique perspective. You can place drawing borders, title blocks, equipment lists, or other information on the sheets. You can also switch between model and paper space with just a double-click to adjust the representation of the model or edit it.

ExplodeX command: You can use this command to convert ellipses and splines into polylines, which is particularly beneficial for preparing drawings for export to other software applications or devices that do not support ellipses or splines (for example, legacy engraving devices). In addition, you can use the Explode command for other complex entities, such as Blocks.

Unique collaboration tools: Most CAD projects demand the input and feedback of an entire team, so effective collaboration and annotation tools are critical. With the VoiceNotes feature,

CorelCAD 2015 lets you add recorded messages, reminders, or instructions directly in your drawing. Great for a quick onsite or in-meeting review, VoiceNotes allow you to quickly document your ideas so they can be incorporated later.

You can also easily mark up drawing items with freehand sketches or attach other drawings and images as references, which can be clipped to show only the relevant portions. To accelerate and simplify reviews, you can mask portions of a drawing to exempt them from annotations.



QuickGroup: This command makes it easy to quickly group drawing entities. You simply select the entities you want to group, right-click and choose **Entity Group ► Quick Group**.

Revision Cloud tool: With CorelCAD 2015, you can create Revision Clouds to highlight areas that require or contain revisions, making the review and revision processes simpler and more efficient. Drawing areas can be accentuated with specific shapes, such as rectangular, elliptical, and freehand clouds. In addition, you can set the specific layer for a cloud, line color, style, and weight, as well as adjust the radius of the cloud's sequential arc.

Give it a try

Annotating with VoiceNotes

- 1 In the 3D Modeling or Drawing and Annotation workspace, click the **Annotate** tab.
- 2 In the **Markup** group, click **Insert/Edit VoiceNote**.
- 3 Select a point in the drawing to place the VoiceNote and open the VoiceNote dialog box.
- 4 Using the controls in the VoiceNote dialog box, record an audio note. You can also add a text message to a VoiceNote.
- 5 Click **OK**.

A VoiceNote icon appears in the drawing .

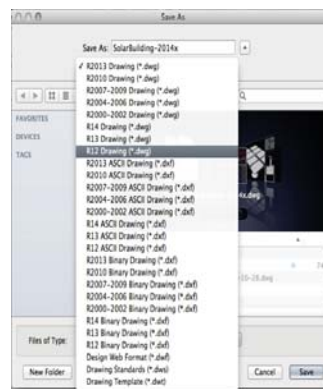
You can open a VoiceNote by typing **VoiceNote** at the command prompt, and clicking a VoiceNote icon.

Advanced .DWG file support and industry-standard tools

While most CAD tools let you work with AutoCAD .DWG files, many employ their own native file formats. Often, converting these file formats to and from .DWG, causes critical loss or misrepresentation of parts of the drawing. And some CAD tools are unable to open these third-party proprietary file formats. CorelCAD 2015 uses .DWG as its primary drawing format, so you're assured of worry-free collaboration.

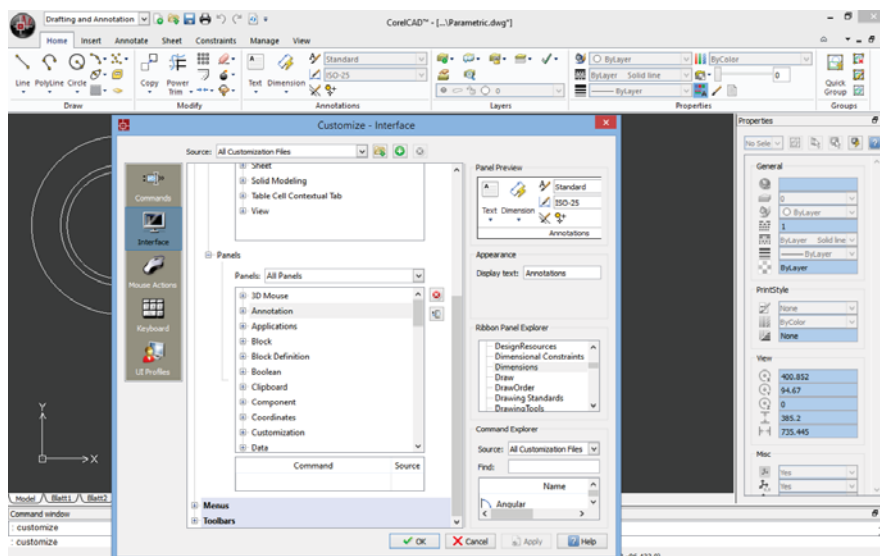
Many CAD tools and their proprietary file formats contain elements that aren't supported in .DWG. And conversely, AutoCAD has features that aren't supported by some applications, which can cause untimely and unwanted surprises during file conversion. With CorelCAD 2015 and its ability to process the file attributes of non-supported AutoCAD features, you'll enjoy full compatibility when collaborating with partners and customers who work with the .DWG file format.

CorelCAD 2015 is compatible with any file saved as in AutoCAD R12 through AutoCAD R2013 .DWG. The ability to save drawings to widely adopted R12 .DWG and .DXF formats means that you can continue to work with any legacy hardware, such as a laser engraver or plotter that only reads that version. Plus, you can even use CorelCAD to recover damaged or corrupted .DWG and .DXF files in all format versions.



What's more, CorelCAD 2015 offers industry-standard tools and compatibility with all major CAD programs, facilitating collaboration and file sharing.

Enhanced! Ribbon user interface (UI): Familiar UI and efficient tool access help to ease the transition for new users migrating from other Windows-based CAD applications, such as AutoCAD. CorelCAD 2015 is compatible with all major CAD programs so users will feel at home working with a classic UI and traditional menu items or modern ribbon UI workspaces. In addition to offering workflow-oriented Ribbon workspaces*, such as 2D Drafting or 3D Modeling, CorelCAD 2015 lets you tailor a workspace to specific needs with Ribbon UI customization. Plus, you can easily import customized AutoCAD workspace files (CUIX) and map those tools and functions directly to the CorelCAD ribbon.



Give it a try

Choosing and creating a Ribbon workspace

- 1 Click the drop-down menu **Classic Default** in the upper left corner of the workspace, and choose an option:
 - **3D Modeling**
 - **Drafting and Annotation**
- 2 Click the **Manage** tab, and click **Interface** in the **Customization** group.
- 3 On the Interface page of the Customize dialog box, expand **Ribbon**, then **Tabs**.
- 4 In the **Tabs** tree view, right-click and click **New Tab**.
- 5 Click **Show ribbon explorer** to expand the Ribbon Explorer.
- 6 In the **Appearance** area, edit the tab name in the **Display text** field.
- 7 Add panels to the tab.

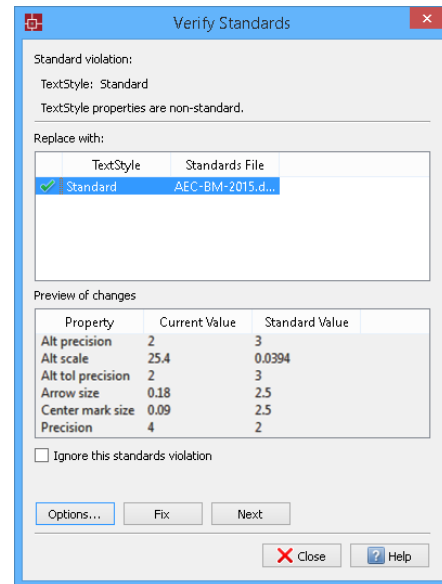
Familiar CAD user interface: If you've worked in other popular CAD applications, there's no learning curve with CorelCAD, so you can be productive immediately. Offering a familiar CAD user interface — including the command line — you can quickly get to work by using the same commands and keyboard shortcuts you already know.



AutoCAD 2013/2015 .DWG support:

CorelCAD 2015 saves to R2013 .DWG natively, which ensures full compatibility, support, features, and CorelCAD file attributes in .DWG format. This level of support is paramount for users who receive and manipulate files created with AutoCAD 2015, AutoCAD 2014 or AutoCAD 2013, and ensures that you can seamlessly work with customers and partners who use AutoCAD.

CAD standards verification: CorelCAD 2015 makes it easy to verify a drawing to ensure compliance with industry, corporate, or project standards. The VerifyStandards command checks the current drawing to match naming conventions, such as layer properties, line styles, dimension styles, and text styles, with an associated Drawing Standards file (DWS). You can then quickly replace any nonstandard items.



Give it a try

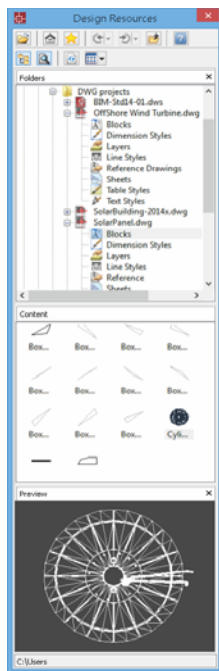
Verifying a drawing

- 1 To associate a Drawing Standards (DWS) file, in the 3D Modeling or Drafting and Annotation workspace, click the **Manage** tab.
- 2 In the **Standards** group, click **Drawing Standards**.
- 3 In the Options - Drawing Standards dialog box, click the **New** button.
- 4 In the Select File dialog box, navigate to the folder containing your drawing standards files, select one, and then click **Open**.
- 5 In the **Standards** group, click **Verify Standards**.

Give it a try

- 6 In the Verify Standards dialog box, select any item that violates drawing standards.
- 7 In the **Replace with** area, select a drawing standard that matches the intended appearance, and then click **Fix**.

Design Resources docker: With the handy Design Resources docker, you can quickly access and repurpose existing design assets, such as blocks, dimension styles, layers, line styles, reference drawings, sheets, table styles, and text styles. The Design Resources docker makes it easy to find and access both local and network design assets.



Give it a try

Using the Design Resources docker

- 1 In the classic CoreCAD 2015 workspace, click the **Design Resources** button on the property bar. In any CoreCAD 2015 workspace, you can open or close the Design Resources docker by pressing **Ctrl+2**.

You can also right-click the property bar and choose **Design Resources** from the drop-menu.

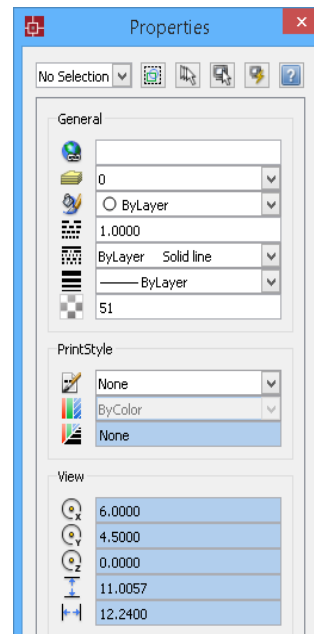
Give it a try

- 2 In the **Folders** section, navigate to a folder containing .DWG files and select a file.
- 3 In the **Contents** section, choose one of the following options to see the reusable assets:
 - **Blocks**
 - **Dimension Styles**
 - **Layers**
 - **Line Styles**
 - **Reference Drawings**
 - **Sheets**
 - **Table Styles**
 - **Text Styles**

When you choose an asset from the **Contents** area, the content is displayed in the **Preview** area.

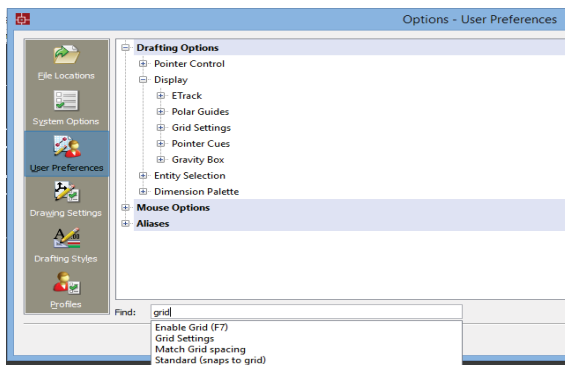
- 4 Click to insert the asset in the current drawing.

Properties docker: Whether your background is graphic design or CAD, the Properties docker is a familiar, versatile feature. It gives you the ability to manipulate the geometry and properties of entities, including layers, colors, line styles, and line weights. You can also use the Properties docker to easily copy attributes from one object to another.



Enhanced! In-place text editing: Instead of using a separate dialog box, CorelCAD offers direct onscreen text editing. And in CorelCAD 2015, you can quickly stack text and paste formatted text from Microsoft Word within your project. With in-place text editing, it's easy to modify the definitions of components (block definitions) or elements (referenced drawings). Plus, for greater efficiency, Component instances in your drawings now show changes in real time.

Search in Options dialog box: CorelCAD 2015 provides search capability in the Options dialog box, making it faster and easier to locate relevant settings, preferences, drafting styles, drawing file properties, and more. This also enables quicker customization by eliminating the need to manually navigate various tabs in the Options dialog box. In addition, users who are new to CorelCAD will be able to instantly find comparable features and functions by using familiar search terms, which can save valuable time while migrating from another application.



Give it a try

Searching the Options dialog box

- 1 In the 3D Modeling or Drafting and Annotation workspace, click the **Manage** tab.
- 2 In the Customization group, click **Options**.
- 3 In the Options dialog box, type a keyword in the **Find** field.

A drop-menu updates in real-time as you type, offering immediate results.

For example, by typing (**layer**) you'll be presented with options relevant to layers.

Give it a try

- 4 Choose an option from the drop-menu to access the appropriate command or setting.

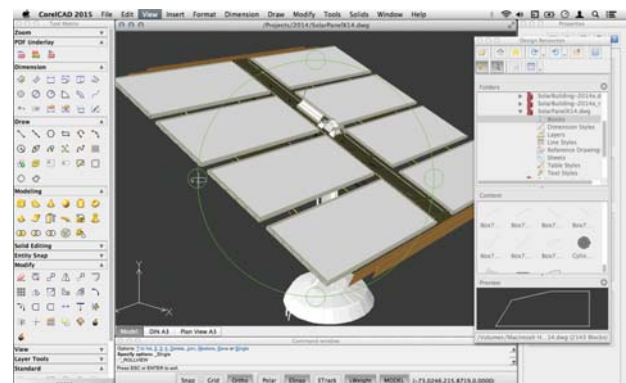
Layer Transparency: With support for AutoCAD R2013 .DWG file formats, CorelCAD 2015 ensures full visual integrity with existing CAD files. For advanced designs, you can apply layer transparency to highlight specific content, or to make content below the current layer visible.

PDF Underlay: You can reference PDF files in a drawing as a PDF Underlay. You can specify the layer visibility of PDF Underlays, clip the PDF Underlay to display only a portion of the PDF, and detach underlayers from current drawings. CorelCAD 2015 also supports Microstation DGN files as underlays.

Hassle-free file sharing: CorelCAD 2015 facilitates collaboration with colleagues and clients by providing support for a variety of leading industry-standard formats, including SVG, ACIS SAT, and DWF. Plus, the ability to save to PDF ensures that non-CAD users can always view your drawings.

Work with GIS files: CorelCAD 2015 provides support for GIS files in ESRI Shape (.SHP) file format. This lets you visualize maps and geospatial models that were created by geographic information systems (GIS) applications.

Repurpose 3D CAD files: With support for the popular 3D exchange file format ACIS SAT, CorelCAD 2015 ensures that you can open and work with 3D models.



Powerful CAD engine and CorelDRAW graphics support

CorelCAD 2015 delivers state-of-the art CAD expertise and performance with the renowned ARES platform. With modern code and a popular 64-bit application, you'll have the speed you need for productivity.

CorelCAD for Windows offers support for CorelDRAW® (CDR)* and Corel DESIGNER® (DES)* file formats, ensuring a seamless workflow, from sketching and technical design, to presentation and technical documentation.

Native 64-bit support: For both Windows and Mac OS workflows, CorelCAD 2015 provides 64-bit CAD environments that can seamlessly process large CAD files. Plus, a 32-bit version is included for Windows users who may need to work with less powerful hardware configurations.

Application performance and speed: With its native 64-bit architecture, CorelCAD 2015 offers increased application speed for both Windows and Mac OS users. The application also provides accelerated display regeneration, which results in smoother zooming and panning operations in large and complex CAD drawings.

Access drafts and sketches from CorelDRAW®*: Many designers prefer to use a creative graphics application for making first sketches, prior to getting down to the precise CAD drafting and 2D/3D modeling work. With CorelCAD 2015 for Windows, you can import CorelDRAW (CDR) and Corel DESIGNER (DES) files as model space objects with a representation in a layout sheet. You can also work seamlessly with multi-page CDR files (from version 8 to X7) and DES files (from version 10 to X6).

Publish to CorelDRAW® and Corel DESIGNER®*: CAD files aren't used only in Engineering departments; however, integrating CAD files into other corporate workflows has always

been a challenge. Graphics professionals working in other areas of a company regularly have to deal with CAD files because they often contain content ideal for presentations, technical documentation, or marketing materials. CorelCAD 2015 for Windows simplifies the repurposing of CAD files by offering export to CorelDRAW and Corel DESIGNER formats*, so you can quickly access and easily reuse that information.

** Import and export of CorelDRAW (.CDR) and Corel DESIGNER (.DES) file formats is only available in CorelCAD 2015 for Windows.*

Flexible licensing and customization options for Windows & Mac OS

You can work quickly and efficiently on both Windows and Mac OS, and flexible licensing options ensure that CorelCAD 2015 adapts to your working needs.

And with CorelCAD 2015, you don't need programming knowledge to customize the interface. It's also easy to reuse existing macros, automate tasks, or add new functionality.

Flexible licensing options: You can match your working environment to your design needs with the flexibility of CorelCAD. As a hybrid product (Windows PC and Mac), this application can be used in a variety of ways and one license can be used on both your desktop and laptop.

Operating system freedom: CAD programs have traditionally been designed to run almost exclusively on Windows operating systems, but CorelCAD changes that. Whichever OS you prefer, Mac or Windows, CorelCAD lets you work quickly and efficiently on your platform of choice. And while some Mac OS CAD tools aren't nearly as feature-rich as their Windows equivalent, CorelCAD is designed to give Windows and Mac users almost the same level of functionality (*all features apply to both operating systems unless noted*). For a comparison of features available on Windows and Macintosh operating systems, see "Comparing CorelCAD 2015 for Windows and Mac OS to Light CAD applications" on page 21.

Windows 8 and Mac OS support: CorelCAD 2015 is fully accessible for Windows 8 users through the desktop. Mac users can take full advantage of new Mac OS X features, including full screen application mode. Plus, CorelCAD 2015 is optimized for high DPI resolutions, ensuring that UI elements appear crisp and legible when displayed on high resolution monitors.

Automation support: You can extend your productivity by taking advantage of the LISP and Microsoft Visual Studio Tools for Applications (VSTA)* programming interfaces to automate repetitive tasks and create your own functions, routines, and plug-ins. You can also access the plug-in store for CorelCAD Add-Ons and third-party enhancements that can help you add new functionality to the application (*Windows version only).

Enhanced! Microsoft Visual Studio Tools for Applications (VSTA) support: In CorelCAD 2015, VSTA support has been updated and enhanced. For Windows users with a Microsoft Visual Studio licence, CorelCAD 2015 offers built-in VSTA features, which make it easy for anyone to automate repetitive tasks and command sequences. With the VSTA Manager toolbar, you can easily record, edit, and run VSTA macros. In addition, integration with the VSTA development environment offers extended functionality to help users create advanced macros. Users without a Microsoft Visual Studio licence can run VSTA macros.

Enhanced! LISP support: If you're migrating from AutoCAD, there's no need to rewrite time-saving macros that automate common tasks and extend the feature set. CorelCAD 2015 fully supports LISP routines created for AutoCAD. Other enhancements include support for Visual Lisp and ARX. CorelCAD 2015 also provides Icon menu support when working with LISP routines. This means that you can build custom dialog boxes that display preview thumbnails (SLD) of CAD components, which is especially useful for building custom libraries. In addition, CorelCAD 2015 adheres to a common structure for LISP programming, making it easy to reuse any existing automations without need to recompile.

Give it a try

Running a LISP macro

- 1 In the 3D Modeling or Drawing and Annotation workspace, click the **Manage** tab.

Give it a try

2 In the **Applications** group, click the **Load Application**  button.

3 In the Select File dialog box, navigate to the sample file **DrawCircle.lsp** ([available for download here](#)), and click **Open**.

Running this LISP routine, originally created for AutoCAD, can save time when drawing a series of circles of a pre-defined size.

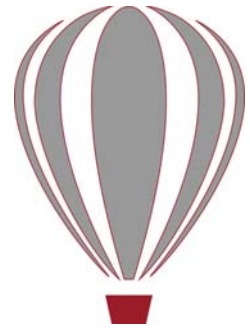
4 In the **Applications** group, click the **Load Application** button.

5 In the Select File dialog box, navigate to the sample file **DrawingProps.lsp** and click **Open**.

Running this LISP routine retrieves and allows you to edit document summary properties.

Having the ability to use LISP routines from other CAD programs allows you to extend functionality and enhance tools without having to spend time coding.

4



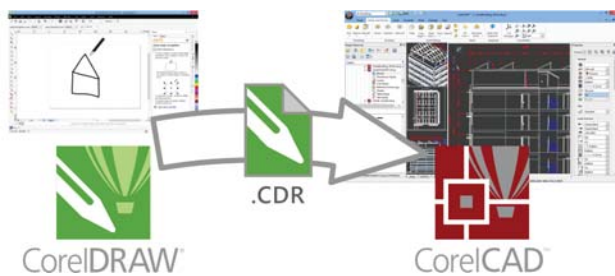
Integrating CorelCAD™ 2015 into other graphics workflows

CorelCAD 2015 bridges the gap between CAD and other graphics workflows by offering import from and export to CDR and DES formats.

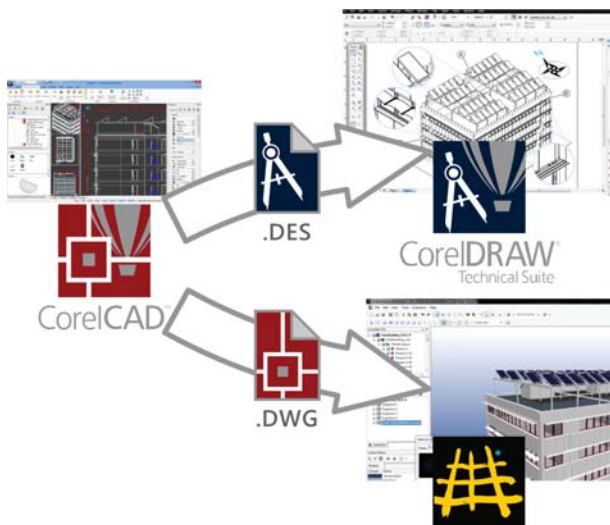


CAD applications usually provide very little file support for exporting drawings, creating a disconnect when you're trying to repurpose CAD for technical illustration or marketing design.

Unique to CorelCAD, this level of file support creates a complete, compatible graphics workflow from Corel, covering everything from concept design (CorelDRAW or Corel Painter), to CAD (CorelCAD), technical illustration (Corel DESIGNER) and marketing deliverables (CorelDRAW and Corel PHOTO-PAINT).

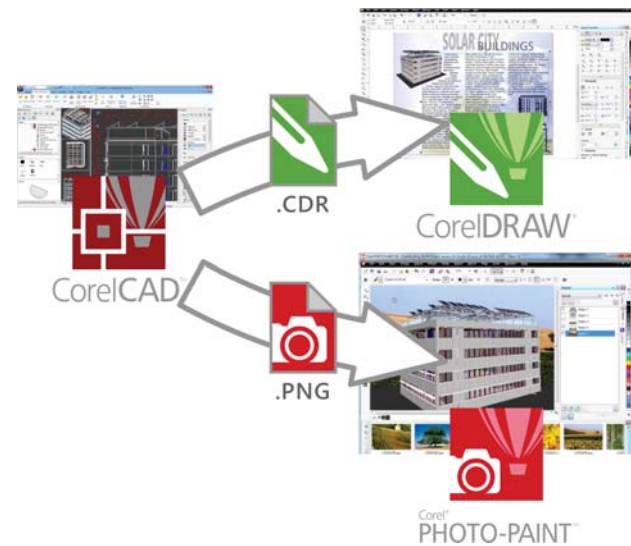


This simplifies the process of getting CAD models into downstream graphics workflows. CAD drawings are unreadable to most people. Exporting 3D CAD to a vector-based format, such as CorelDRAW or Corel DESIGNER, allows you to repurpose that content.



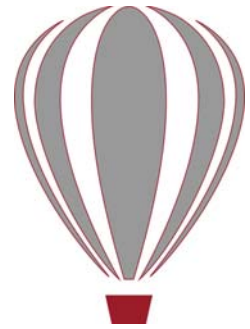
The vector files can be used in Corel DESIGNER to create technical illustrations destined for a wide variety of documentation, such as assembly instructions, parts catalogs, and training materials.

You can then leverage those technical illustrations in a creative way using CorelDRAW and Corel PHOTO-PAINT to create a range of marketing materials, such as flyers, web pages, presentations, and more



** Please note, import and export of CorelDRAW (.CDR) and Corel DESIGNER (.DES) file formats is only available in CorelCAD 2015 for Windows.*

5



Comparing CorelCAD™ 2015 for Windows and Mac OS to Light CAD applications

This table compares the features included in CorelCAD 2015 to features offered in other Light CAD applications.

	CorelCAD 2015	Light CAD applications
File support		
AutoCAD R2013 .DWG native file format	✓	✓
Legacy CAD file (AutoCAD R12 .DWG) support	✓	–
DXF (Drawing Exchange File) support	✓	✓
Template Drawings (DWT) support	✓	✓
Drawing web format (DWF) support	✓	–
Recovery of corrupted drawings	✓	✓
Raster image support (BMP, GIF, JPG, PNG, TIFF)	✓	✓
OLE support	✓ *	✓ *
Import CorelDRAW® (CDR) and Corel DESIGNER® (DES)	✓ *	–
Number of supported file formats - Import	12 */10	~5
User interface		
Ribbon user interface (UI)	✓ *	✓ *
Classic menu and toolbars	✓	✓
Edit multiple drawings (MDI)	✓	✓
Dockable Properties palette	✓	✓
Tool matrix	✓	–
Design Resources docker	✓	✓
References Manager palette	✓	✓
Right-click context menus	✓	✓ *
Command prompt area	✓	✓
Industry-standard command sequences	✓	✓
Options Settings Manager	✓	✓
Search in Options dialog box	✓	–

[* — Windows version only; (✓) — limited availability/support]

	CorelCAD 2015	Light CAD applications
Viewing and Selection tools		
Real-time Pan and Zoom	✓	✓
3D Mouse navigation	✓ *	✓ *
Object Snap (ESnap)	✓	✓
Object Tracking (ETrack) / dynamic guides	✓	✓
QuickGroup tool and Group Selection mode setting	✓	✓
Drafting and Editing		
Layers Toolbar	✓	✓
Layer states (Save and Restore)	✓	✓
Layer Tools	✓	✓
Layer Transparency	✓	✓
Layer Preview tool	✓	—
Rectangle creation with support for area and dimension	✓	✓
Line weights (display and print)	✓	✓
Exploding Splines and Ellipses (to polylines)	✓	—
Exploding blocks instances while maintaining attributes (ExplodeBlockX)	New!	—
Multiline	✓	✓
Drawing constraints (Parametric drawing tools)	New! *	✓
QuickModify command (move, rotate, copy in one tool)	New!	—
PowerTrim	New!	—
Simplify drawings by removing overlapping objects (DiscardDuplicates)	New!	✓
Hatch editing	✓	✓
Gradient hatch	✓	✓
True Colors support	✓	✓
Multi-language character set	✓	✓
TrueType Fonts support	✓	✓
Spell checking	✓	✓
In-Place multiline text editing	✓	—
In-Place editing of stacked text	New!	✓
In-Place editing of block definitions and external references	✓	✓
Dynamic blocks support (inserting and manipulating)	New!	✓
CAD drawing standards verification	✓	—
Annotation		
Associative dimensions	✓	✓
Arc length dimensions	✓	✓
Jogged radius dimensions	✓	✓
Smart Dimensioning tool	✓	(✓)
Dimension palette (dynamic onscreen properties bar)	New!	—
Redline and markup	✓	✓

[* — Windows version only; (✓) — limited availability/support]

	CorelCAD 2015	Light CAD applications
PDF Underlay	✓	✓
DGN (Microstation CAD file format) Underlay	✓	✓ *
VoiceNotes	✓	—
Revision clouds	✓	✓
3D viewing and design		
3D model viewing	✓	✓
Projected (Isometric) views	✓	—
Shaded / Rendered display modes	✓	—
Lights	✓	—
Materials Optional (w/ Render plug-in)	(✓) *	—
3D surface commands	✓	—
3D solid modeling	✓	—
Layout tools		
Tables	✓	✓
Images / References / Underlay rectangular and polygonal clipping	✓	✓
Masking Entities (Wipe out)	✓	✓
Non-rectangular viewports	✓	✓
Printing, plotting, layout sheets		
Multiple Layout Sheet Tabs (Multiple Paper Spaces)	✓	✓
Lock Layout Viewports	✓	✓
CTB Color table support	✓	✓
STB Style table support	✓	✓
Print Configuration Manager	✓	✓
Batch Print	✓	✓
Publishing/Output		
Export to CorelDRAW (.CDR) and Corel DESIGNER (.DES)	✓ *	—
Export to PDF	✓	✓
PDF Creation using Print Table Styles	✓	✓
Export to SVG (Scalable Vector Graphics)	✓	—
STL Export for 3D printing	✓	—
JPEG / PNG output using Print Table Styles	✓	✓
Number of support file formats - Export	17*/15	
Collaboration		
GIS file format support (ESRI Shape *.shp files)	✓	—
3D Solid geometry exchange file format (*.sat) support	✓	—
Pack and Go command	✓	✓

[* — Windows version only; (✓) — limited availability/support]

Customization		
Visual Menu and Toolbar Customization	✓	✓
Ribbon UI customization	New!*	✓*
User profiles management	✓	–
CUI Menu files support	✓	✓
CUIX (AutoCAD Ribbon UI workspaces) import	Enhanced!*	✓*
Upgrade user settings from previous version	New!	✓
Programming		
LISP (including support for LISP commands from other CAD applications)	✓	–
COM API	✓*	–
Microsoft Visual Studio Tools for Applications (VSTA) support	✓*	–
Plug-in Store (corecadmarket.com)	✓	–
Licensing		
Single license	✓	✓
Network licenses	✓	–
Maintenance (upgrade protection)	✓	✓
Educational licenses	✓	✓
OS support		
Windows 8/8.1	✓	✓
Windows 7	✓	✓
Native 64-bit application	✓	✓
32-bit OS support	✓*	✓*
Mac OS X Yosemite (10.10)	New!	–
Mac OS X (10.7-10.9)	✓	✓
MSI-based network deployment	✓*	✓*

Minimum system requirements

Windows

- Microsoft Windows 8, Microsoft Windows 7 (32-bit or 64-bit versions)
- Intel Pentium 4 (2 GHz or faster)
- 2 GB RAM (4 GB or more recommended)
- 500 MB free hard disk space
- High-color (16-bit) graphics card (3D graphics accelerator card recommended)
- 1024 × 768 screen resolution (1200 × 800 recommended)
- Mouse or tablet
- CD-ROM drive for installation from CD
- Internet connection for installation from download and access to the plug-in store

Mac OS

- Mac OS X v10.7 (Lion), v10.8 (Mountain Lion), v10.9 (Mavericks), or v10.10 (Yosemite)
- Intel processor
- 1 GB RAM (2GB recommended)
- 500 MB hard-disk space
- 1024 × 768 display (1280 × 800 recommended) with 16-bit video card
- Mouse or tablet
- CD-ROM drive for installation from CD
- Internet connection for product activation and access to the plug-in store

About Corel

Corel is one of the world's top software companies providing some of the industry's best-known graphics, productivity and digital media products. Boasting the most comprehensive portfolio of innovative software, we've built a reputation for delivering solutions that are easy to learn and use, helping people achieve new levels of creativity and productivity. The industry has responded with hundreds of awards for innovation, design, and value.

Used by millions of people around the world, our product lines include CorelDRAW® Graphics Suite, CorelDRAW® Technical Suite, CorelCAD™, Corel® Painter®, Corel® PaintShop® Pro, Corel® VideoStudio®, and Corel® WordPerfect® Office. For more information on Corel, please visit www.corel.com.

Copyright 2014 Corel Corporation. All rights reserved.

CorelCAD™ 2015 Reviewer's Guide

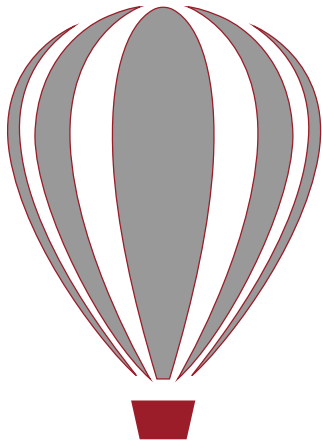
Protected by patents in the United States and elsewhere.

Product specifications, pricing, packaging, technical support and information ("specifications") refer to the retail English version only. The specifications for all other versions (including other language versions) may vary.

INFORMATION IS PROVIDED BY COREL ON AN "AS IS" BASIS, WITHOUT ANY OTHER WARRANTIES OR CONDITIONS, EXPRESS OR IMPLIED, INCLUDING, BUT NOT LIMITED TO, WARRANTIES OF MERCHANTABILITY, SATISFACTORY QUALITY, MERCHANTABILITY OR FITNESS FOR A PARTICULAR PURPOSE, OR THOSE ARISING BY LAW, STATUTE, USAGE OF TRADE, COURSE OF DEALING OR OTHERWISE. THE ENTIRE RISK AS TO THE RESULTS OF THE INFORMATION PROVIDED OR ITS USE IS ASSUMED BY YOU. COREL SHALL HAVE NO LIABILITY TO YOU OR ANY OTHER PERSON OR ENTITY FOR ANY INDIRECT, INCIDENTAL, SPECIAL, OR CONSEQUENTIAL DAMAGES WHATSOEVER, INCLUDING, BUT NOT LIMITED TO, LOSS OF REVENUE OR PROFIT, LOST OR DAMAGED DATA OR OTHER COMMERCIAL OR ECONOMIC LOSS, EVEN IF COREL HAS BEEN ADVISED OF THE POSSIBILITY OF SUCH DAMAGES, OR THEY ARE FORESEEABLE. COREL IS ALSO NOT LIABLE FOR ANY CLAIMS MADE BY ANY THIRD PARTY. COREL'S MAXIMUM AGGREGATE LIABILITY TO YOU SHALL NOT EXCEED THE COSTS PAID BY YOU TO PURCHASE THE MATERIALS. SOME STATES/COUNTRIES DO NOT ALLOW EXCLUSIONS OR LIMITATIONS OF LIABILITY FOR CONSEQUENTIAL OR INCIDENTAL DAMAGES, SO THE ABOVE LIMITATIONS MAY NOT APPLY TO YOU.

Corel, the Corel logo, the Corel balloon logo, CorelCAD, CorelDRAW and the CorelDRAW balloon logo are trademarks or registered trademark of Corel Corporation and/or its subsidiaries in Canada, the United States and/or other countries. ARES is a registered trademark of Graebert GmbH. This product and packaging include intellectual property (including trademarks) owned, registered and/or licensed by/from respective third parties. Use of this product is subject to the acceptance of the license agreements included in this package.

All trademarks or registered trademarks are the property of their respective owners.



CorelCADTM 2015

powered by ARES[®]

Media Contact

Michaela Schreiter
Public Relations Manager
Corel Corporation
613-728-0826 ext. 1323
michaela.schreiter@corel.com



Corel Corporation
1600 Carling Ave.
Ottawa, ON
Canada K1Z 8R7

Corel UK Limited
Sapphire Court
Bell Street
Maidenhead
Berkshire SL6 1BU
United Kingdom